

HAWORTH

Fern

Designed By Haworth Design Studio and ITO Design

Standard Lead Time: 15 business days plus shipping

The Fern task chair is the world's first chair designed with edgeless comfort. Fern's Wave Suspension™ system is the heart of the chair and the key to its back comfort and flexibility. Inside is a high level of science, engineering, and innovation that enables Fern to work with you, not against you.



Product Dimensions

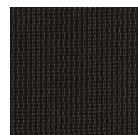
16.5"-21.5"H (Seat Height)

28.5"D x 29"W x 41.5"-47"H

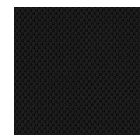
Catalog Code

SFT-U0-4S11A5,MM_S,MB_CL,TR_7,TR_LE

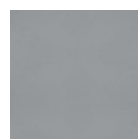
Color



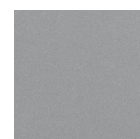
Seat 1 Color
SNAIL
TWIST (MM)
MM_S
GRADE: A



Back 1 Color (Inside)
COAL
FERN MESH (MB)
MB_CL
GRADE: A



Trim Color
FOG
FOG (TR-7)
TR_7
GRADE: B



Frame Color
METALLIC SILVER
METALLIC SILVER
(TR-LE)
TR_LE
GRADE: B

Dimensions

Seat Height Adjustment

Pneumatic (Standard)

Seat Depth Adjustment

Depth Adjustment

Style

Product Type

Task Chair

Back Material

Mesh

Back Lumbar

Lumbar

Surface Treatment, front Side

No Surface Treatment

Arm Style

Height Adjustable Arms

Arm Cap

Soft Cap

Seat Control

Synchro Tilt With Back Stop

Base Material

Plastic

Base Foot

Hard Casters (Dual Wheel)

List Price: \$1,914.97

* The pricing on this cut sheet is not final and is accurate as of 12/15/2022. Please contact your local Haworth dealer or sales representative for the most current pricing.

Questions? Please contact your local Haworth dealer or showroom at [haworth.com/locator](https://www.haworth.com/locator)